

8 7 6 5 4 3 2 1

D

C

B

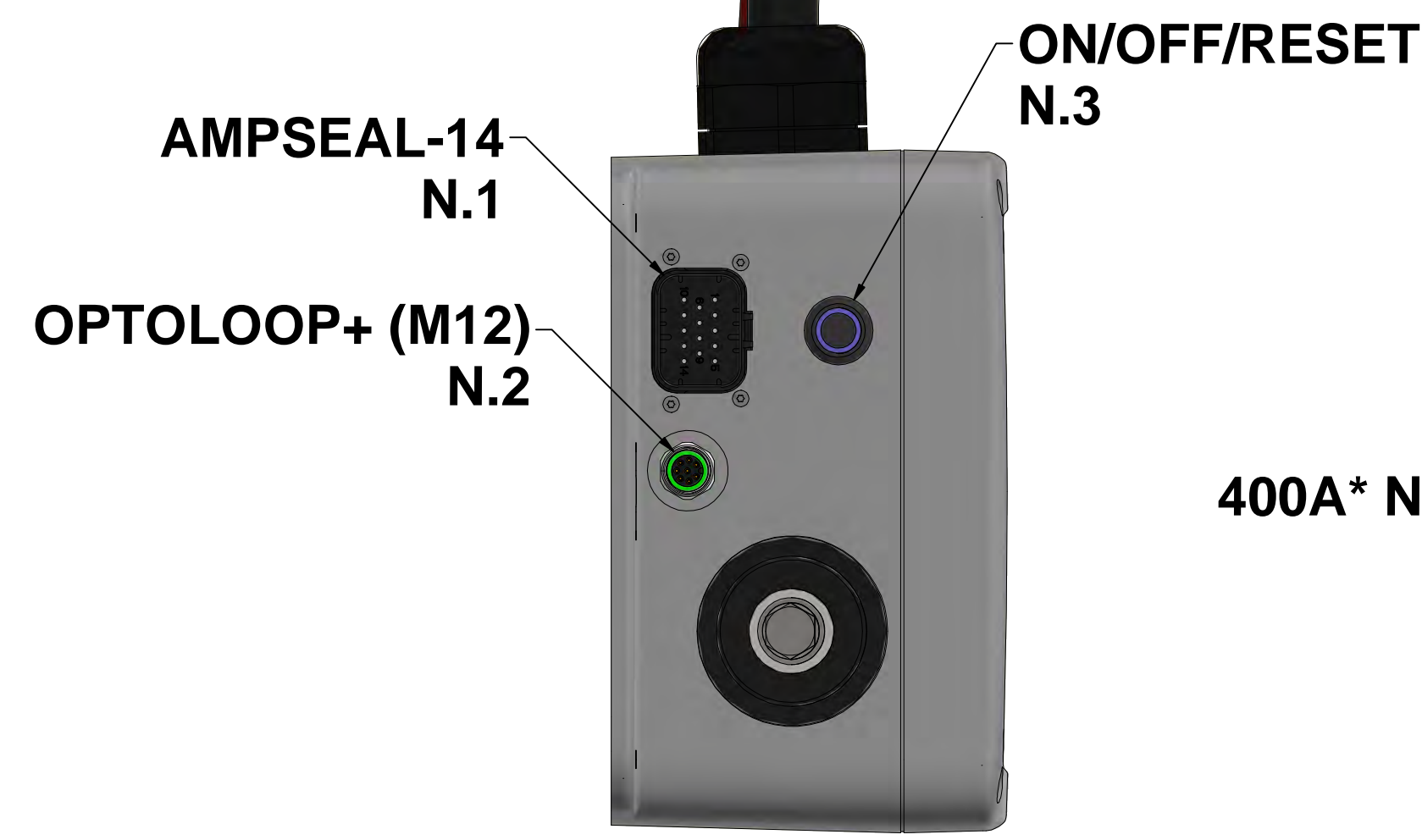
A

D

C

B

A



400A* NEGATIVE
N.4

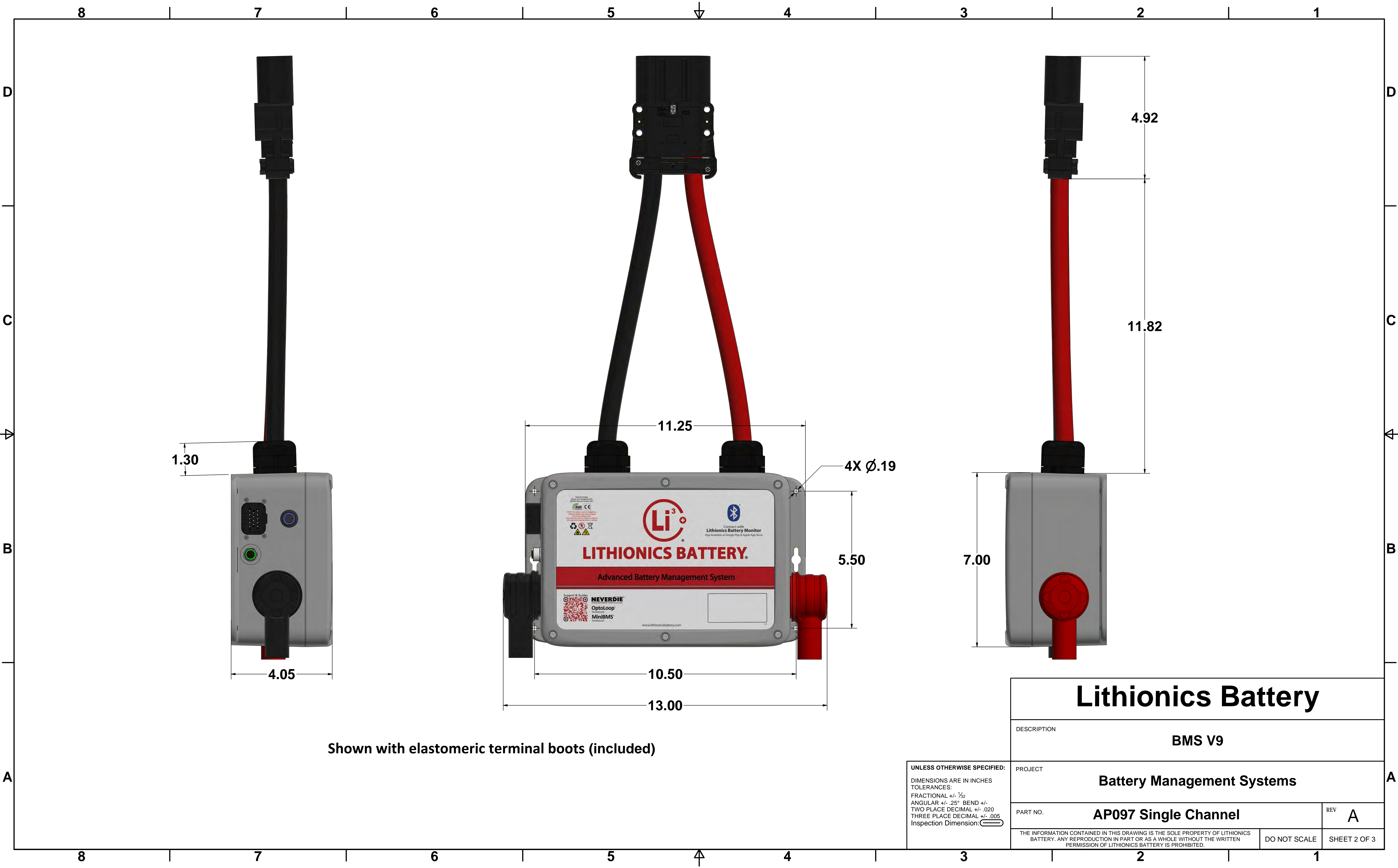


- Notes:**
- N.1 Optional I/O features
 - N.2 Battery Module and CANbus RV-C communication
 - N.3 Lighted LED for power status. Press = on/reset, long-press 3 seconds = off
 - N.4 5/16-18 x 5/8 SS Bolt, Torque to 80in-lbs.
400A continuous requires 350MCM or 2x 4/0 cables connected to each of the BMS terminals for heat dissipation.
With single 4/0 connection rating is 325A.

UNLESS OTHERWISE SPECIFIED:
DIMENSIONS ARE IN INCHES
TOLERANCES:
FRACTIONAL +/- 1/32
ANGULAR +/- .25° BEND +/-
TWO PLACE DECIMAL +/- .020
THREE PLACE DECIMAL +/- .005
Inspection Dimension:

<h1>Lithionics Battery</h1>	
DESCRIPTION	BMS V9
PROJECT	Battery Management Systems
PART NO.	AP097 Single Channel
REV	A
<small>THE INFORMATION CONTAINED IN THIS DRAWING IS THE SOLE PROPERTY OF LITHIONICS BATTERY. ANY REPRODUCTION IN PART OR AS A WHOLE WITHOUT THE WRITTEN PERMISSION OF LITHIONICS BATTERY IS PROHIBITED.</small>	
DO NOT SCALE	SHEET 1 OF 3

8 7 6 5 4 3 2 1



Shown with elastomeric terminal boots (included)

UNLESS OTHERWISE SPECIFIED:
 DIMENSIONS ARE IN INCHES
 TOLERANCES:
 FRACTIONAL +/- 1/32
 ANGULAR +/- .25° BEND +/-
 TWO PLACE DECIMAL +/- .020
 THREE PLACE DECIMAL +/- .005
 Inspection Dimension:

<h1>Lithionics Battery</h1>	
DESCRIPTION BMS V9	
PROJECT Battery Management Systems	
PART NO.	AP097 Single Channel
THE INFORMATION CONTAINED IN THIS DRAWING IS THE SOLE PROPERTY OF LITHIONICS BATTERY. ANY REPRODUCTION IN PART OR AS A WHOLE WITHOUT THE WRITTEN PERMISSION OF LITHIONICS BATTERY IS PROHIBITED.	
DO NOT SCALE	REV A SHEET 2 OF 3

8 7 6 5 4 3 2 1

Voltage	12.8V to 51.2V (4S-16S)
Amperage Continuous	400A*
Bluetooth	Included, with PIN security (Q3 2022 App update)
OptoLoop+ (M12)	Combines OptoLoop analog with CANbus RV-C and power distribution in one circular connector. Replaces previous generation OptoLoop and TIS Temperature Sensors.
AMPSEAL-14 Functions (Support depends on specific AMPSEAL-14 wire harness)	FCC, AGSR, Remote Lighted Reset, Alarm, Battery Low LED, E-Stop, RS232, Aux. Power (AC-Sense), Tri-Color LED Pod
Pre-charge	Included, all supported voltages
Dual Channel Option	Yes, does not remove Pre-charge
Bluetooth App	Included (iOS, Android). Monitoring, Datalogging, Firmware Update. V9 adds cell level data to customer.
Protection Features	Reserve, Pack Over and Under Voltage, Cell Over and Under Voltage, Cell Over and Under Temperature, Contactor Over-Temperature, Contactor State, Short Circuit, Over Current, Pre-charge
Optional Features	Dual Channel, RS232 (but removes BT), Ethernet TCP/IP, E-Stop, IONGage
Easily Integrates With	NCC CANbus Chargers, IonGage Display, IonGate Gateway (Q3 2022), Wakespeed WS500 Alternator Regulator
Weight	8.0 lbs
Dimensions	Overall: 13.0" x 23.74" x 4.0" Enclosure only: 11.25" x 7.0" x 4.0"
IP Rating	IP66



* 400A continuous requires 350MCM or 2x 4/0 cables connected to each of the BMS terminals for heat dissipation. With single 4/0 connection rating is 325A.

UNLESS OTHERWISE SPECIFIED:
 DIMENSIONS ARE IN INCHES
 TOLERANCES:
 FRACTIONAL +/- 1/32
 ANGULAR +/- .25° BEND +/-
 TWO PLACE DECIMAL +/- .020
 THREE PLACE DECIMAL +/- .005
 Inspection Dimension:

<h1>Lithionics Battery</h1>	
DESCRIPTION	BMS V9
PROJECT	Battery Management Systems
PART NO.	AP097 Single Channel
REV	A
<small>THE INFORMATION CONTAINED IN THIS DRAWING IS THE SOLE PROPERTY OF LITHIONICS BATTERY. ANY REPRODUCTION IN PART OR AS A WHOLE WITHOUT THE WRITTEN PERMISSION OF LITHIONICS BATTERY IS PROHIBITED.</small>	
DO NOT SCALE	SHEET 3 OF 3

8 7 6 5 4 3 2 1