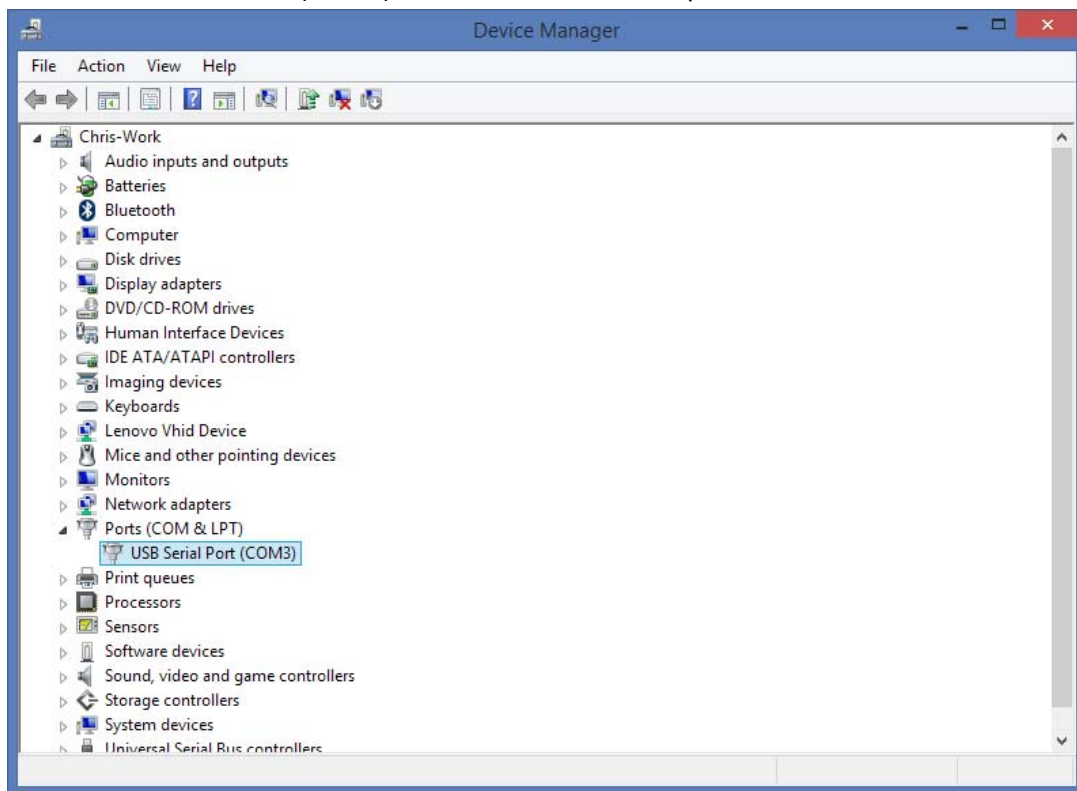




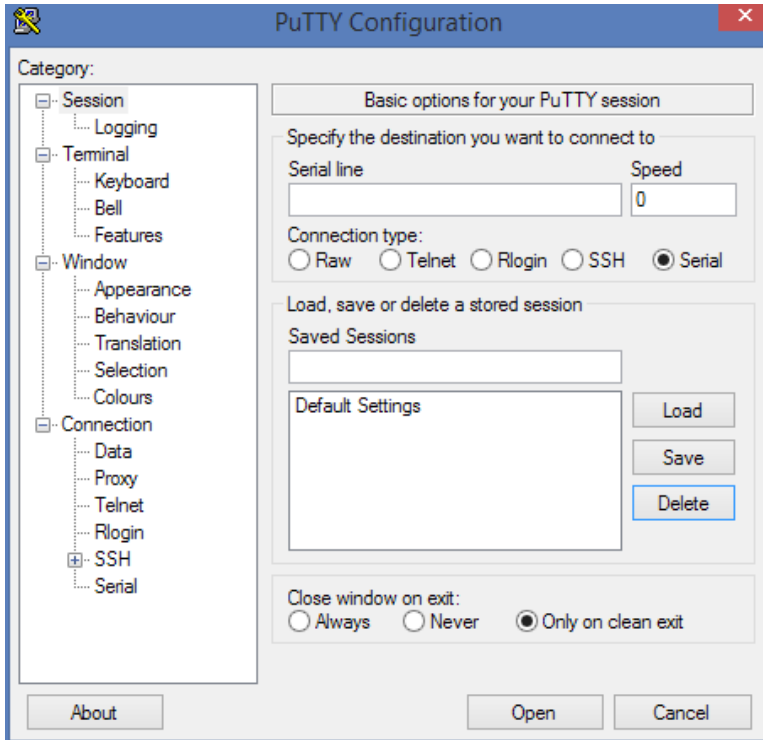
# Lithionics Battery LLC

## Putty Datalogging User Guide

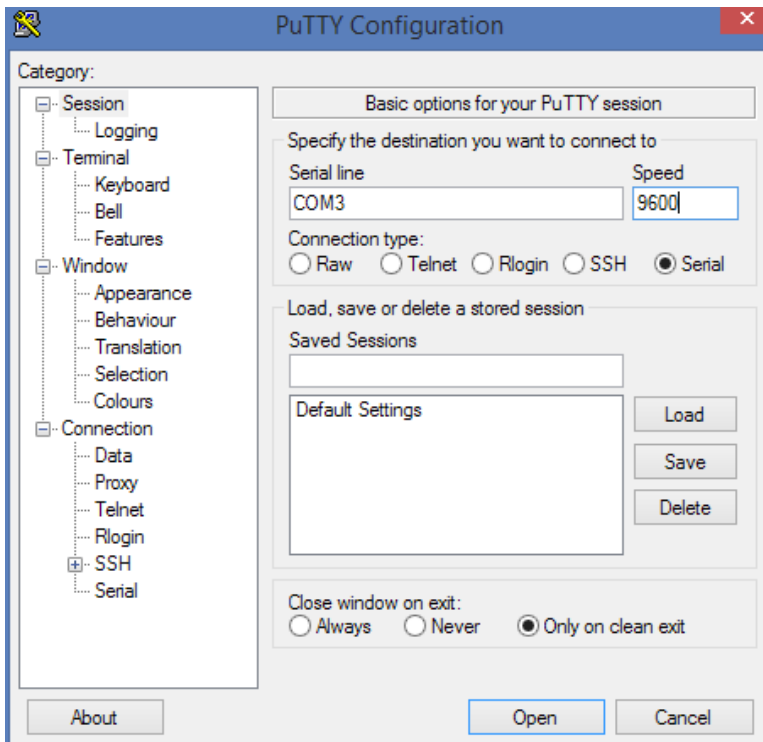
1. Plug in your USB to RS232 DB9 FTDI cable. Allow windows to install the device drivers.
2. Open Windows Device Manager:  
Windows XP/7: Start > Control Panel > Device Manager  
Windows 8: Right Click the Windows Icon at the bottom left of the screen, Select Device Manager
3. In Device Manager locate the “Ports” Category and click on its arrow to expand the section. You will see “USB Serial Port (COMX)”. Take note of the COM port number where X is.



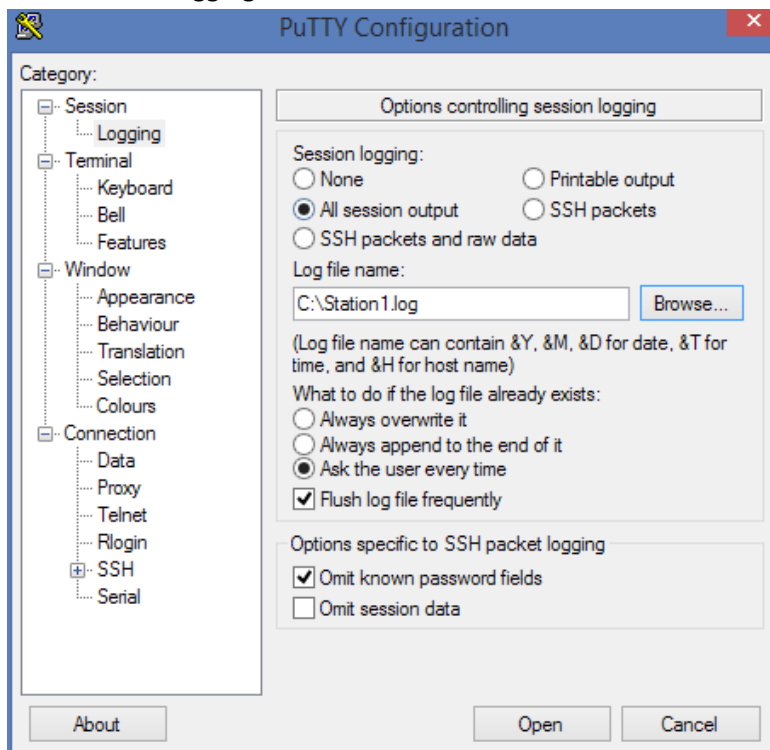
- Putty is open source free software which can be downloaded from: <http://www.putty.org/>  
Once downloaded open Putty.exe.



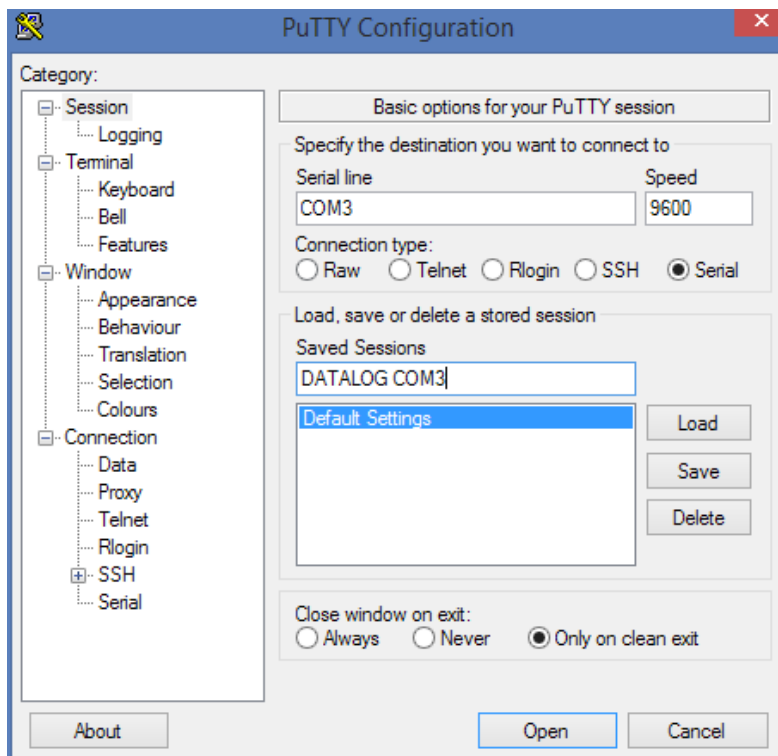
- Enter the COM port for your serial port for “serial line” (found in device manager)
- Enter 9600 for the “Speed”.



7. Click on the “Logging” tab on the left

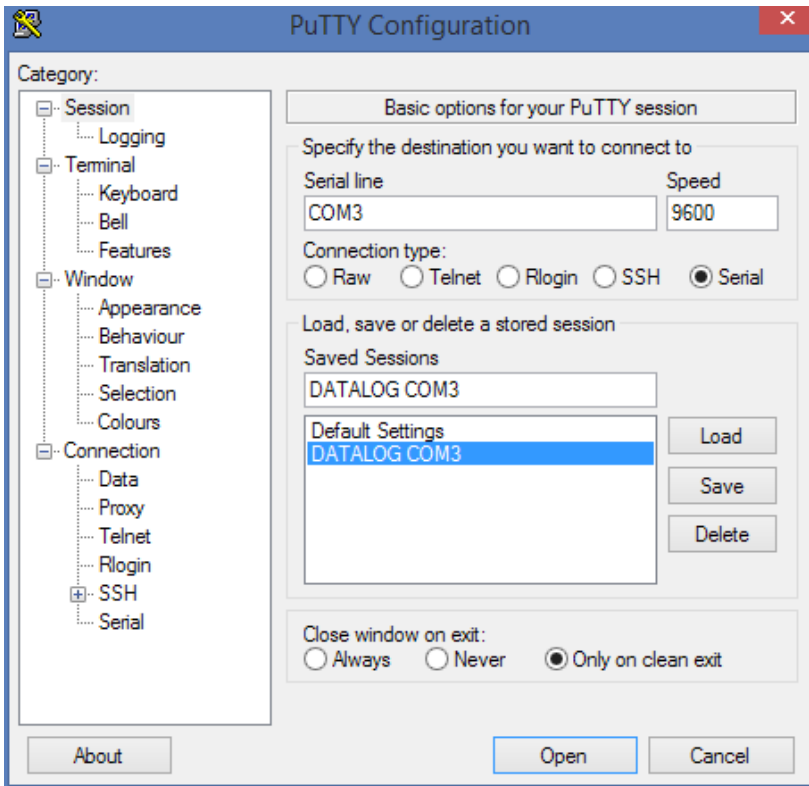


8. Click the “All session output” bullet.
9. Click “Browse...” to select your log file save directory. Save the file as “Station1.log”.
10. Click the “Session” tab on the left



11. Type “DATALOG COMX” where X is your COM port number from device manager in the “Saved Sessions” box and click on “Save”.

12. "DATALOG COMX" will appear as a new preset.



13. Select "DATALOG COMX" and click "Open" to begin data logging.

